

SEA/ Tree Saltash Report to STC Services Committee October 2023

Our very sincere thanks again to Saltash Services Delivery for regularly watering the newly planted trees in the Oaklands area. It has meant that every standard tree we planted last year has survived intact, with the exception of one silver birch which has a broken leader but is likely to survive.

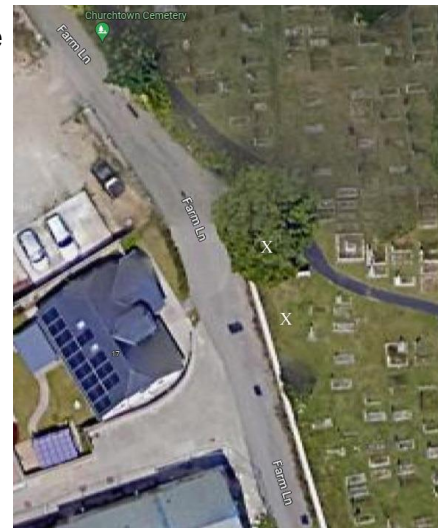
Proposed tree planting, Winter 2023/4: permission requested

We have applied to Cornwall for permission to plant trees at a number of sites on property owned by Cornwall. We would appreciate STC's permission and support for Tree Saltash proposals to plant at 2 of their sites. These proposals are of course open to suggestion from the Committee.

1. Cemetery, replacement for felled ash tree

The large ash tree beside the Farm Lane Pedestrian entrance was felled because of ash die-back and root disturbance of the pathway.

We propose to replace it with two hawthorn trees in the approximate positions marked with X. We have applied to the Joint Burial Board for permission.

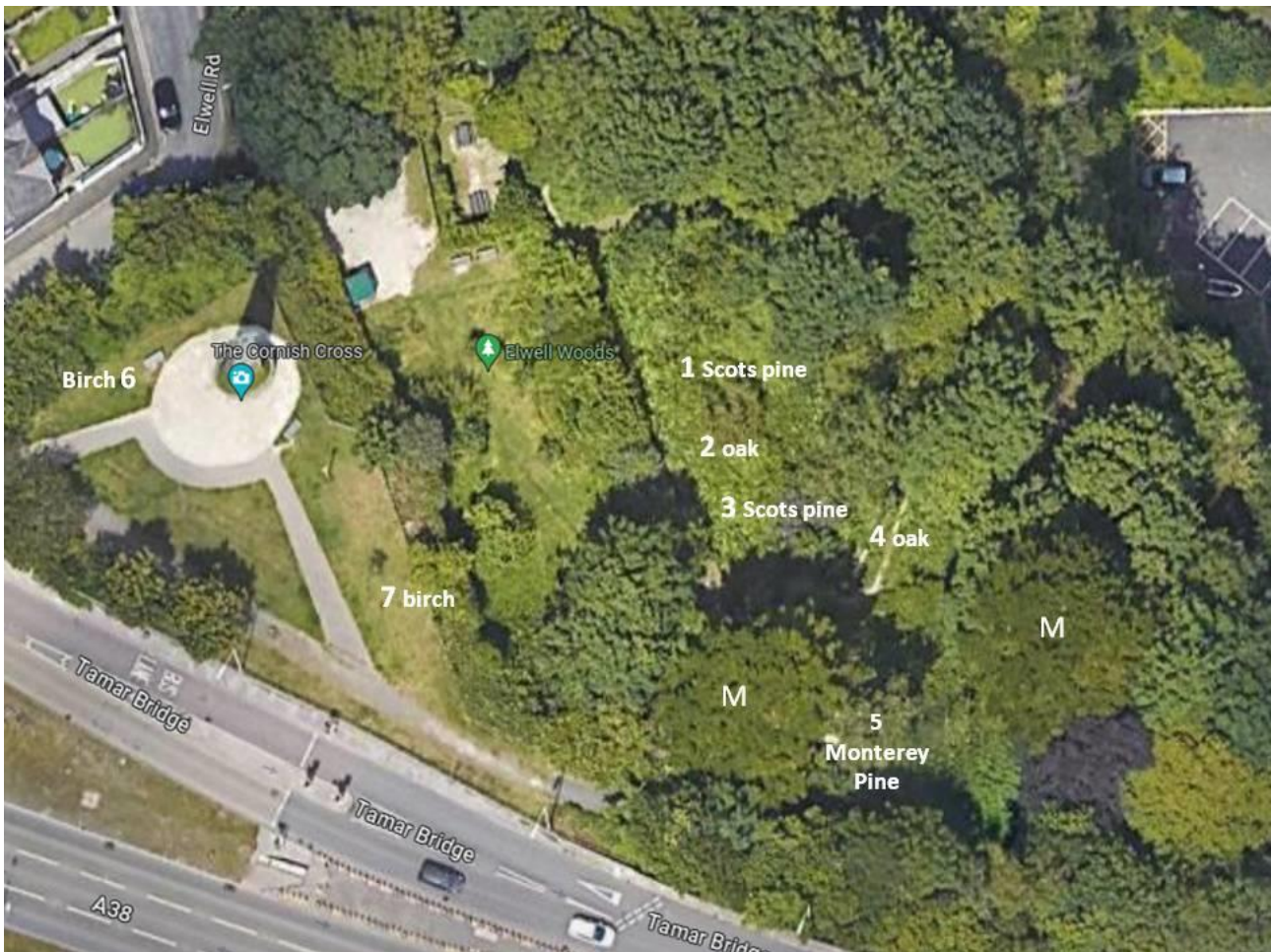


2. Elwell Woods, filling out

There are gaps in the canopy, for various reasons. Sycamore is very dominant in Elwell Woods, which is monotonous for walkers. Sycamore, not being a truly British native tree, is not particularly good for wildlife. So other species are needed for variety. We propose to plant 2 English oak trees and 2 Scots pines in the area shown (1-4). Planted among the undergrowth and with good mulches, we think that they won't need much protection or watering.

Two mature Monterey pines on the site were originally part of a garden, before the bridge was built. They are iconic and will not live healthily for much more than a century. There is space alongside where we propose to establish a replacement Monterey pine (5). Aftercare should be limited as before.

Two birches stand near the Celtic Cross. Birch look good in groups of 3. We propose to plant just one companion birch at each site (6 and 7) this year, so as not to overload our capacity to water them during a drought.



Funding request

Until we can make a final planting plan, we don't know what accessories to apply for in addition to bark and hessian mulch-mats. We hope that Forest for Cornwall will again supply native trees (through Woodland Trust funding) for these sites. That could include all trees except the Monterey pine which is not currently available and may be difficult and expensive to source.

We have difficulty with the timing: the ideal time for tree planting is late November and early December. Unfortunately, as we found last year, supplies of trees and accessories only become available at that time. Also, we don't know at this stage what Forest for Cornwall will fund.

Last year, this led to an unholy scramble to secure funding and place orders at the last minute - and the next Services Committee meeting is not until 14th December.

We have some accessories kept from last year. What would be ideal would be for Services Committee to now agree an upper limit for funding for Tree Saltash, and put in place a system for authorising the actual order details quickly at short notice. Purchases we may need, with approximate prices, are in the following table. We think there are likely to be savings, for instance we may not need another mesh roll this year.

<i>Item</i>	<i>n</i>	<i>£</i>
Stakes	8	50.00
Composted bark	100L	50.00
Mesh roll	1	200.00
Standard trees inc Monterey pine	Up to 3	200.00
Mulch mats		100.00
Total anticipated		600.00

Thank you

Adrian White
SEA, Tree Saltash